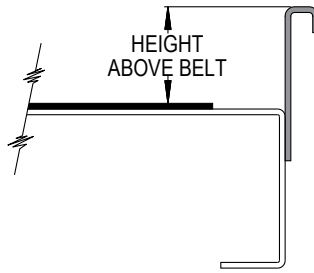


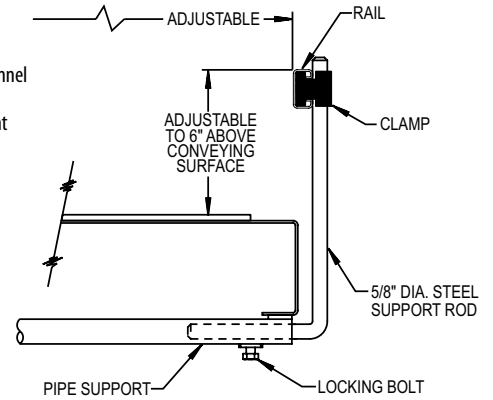
GUARD RAILS

SOLID SIDE GUARDS



- Bolts to side of TA or TL
- 2 in., 4 in., 6 in., 9 in., & 12 in. heights
- Powder painted steel 6 in. thru 12 in. high
- Formed top with alignment strip

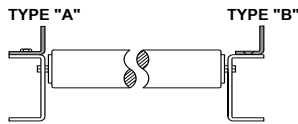
UNIVERSAL ADJUSTABLE CHANNEL



- 1 1/2 in. x 7/8 in. galvanized channel
- Continuous joint

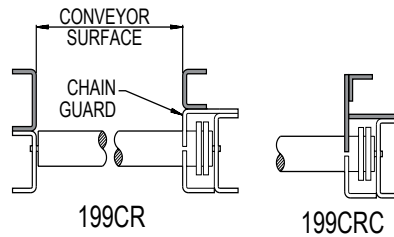
FIXED ANGLE

- 1 in. x 1 in. powder painted steel for 138 and SW conveyors
- 1 1/2 in. x 1 1/2 in. powder painted steel for 1.9 & 2.0 conveyors
- Type B mounted with shaved carriage bolt screws
- 2 in. x 1 1/2 in. x 4 ga. powder painted steel for 2.5 & 2.6 conveyors. Type A only.



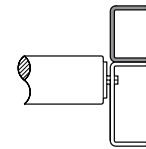
FIXED CHANNEL

- 2 1/2 in. x 1 1/2 in. x 12 ga. powder painted steel channel top of chain guard
- 3 1/2 in. x 1 1/2 in. x 12 ga. painted steel channel other side



FIXED CHANNEL

- 2 1/2 in. x 1 in. powder painted steel channel for 138 & SW conveyors
- 3 1/2 in., 6 1/2 in., 10 in., or 13 in. heights x 1 1/2 in. powder painted steel channel for 1.9 in. & 2.0 in. conveyors



NOTE: Overlapping style available for one direction applications.

BALL TRANSFER TABLE

The Ball Transfer Table is used when products are required to be manually rotated or correctly positioned, such as a work station or other similar operation that requires quick, easy handling of the product. Ball Transfer Table is also used when more than two conveyor lines converge and packages must be transferred from one line to another.



- 1 in. Ball Casters
- Steel Channel Frame 3 1/2 in. x 1 1/2 in. x 10 ga., 2 1/2 in. x 1 in. x 12 ga. (Specify skate wheel or 138 Roller Type when mounted in 2 1/2 in. channel)

Ball Caster Centers	Between Rail Widths (Weight Per Foot)														
	*10"	13"	15"	*16"	17"	19"	21"	22"	23"	25"	27"	31"	33"	37"	39"
2"	19.77	25.86	29.15	29.60	32.45	35.72	39.28	41.77	42.27	45.52	48.81	55.35	58.65	65.19	68.48
3"	15.09	18.06	20.57	21.02	21.53	23.99	25.50	26.95	27.45	29.92	32.43	35.85	38.37	41.79	44.30
4"	12.75	15.33	17.45	17.90	18.41	20.48	21.43	21.80	23.55	24.46	26.58	29.61	30.57	33.60	35.72
6"	-	-	-	15.56	16.07	16.97	18.70	19.15	19.665	20.56	22.90	24.15	25.86	27.75	29.48

